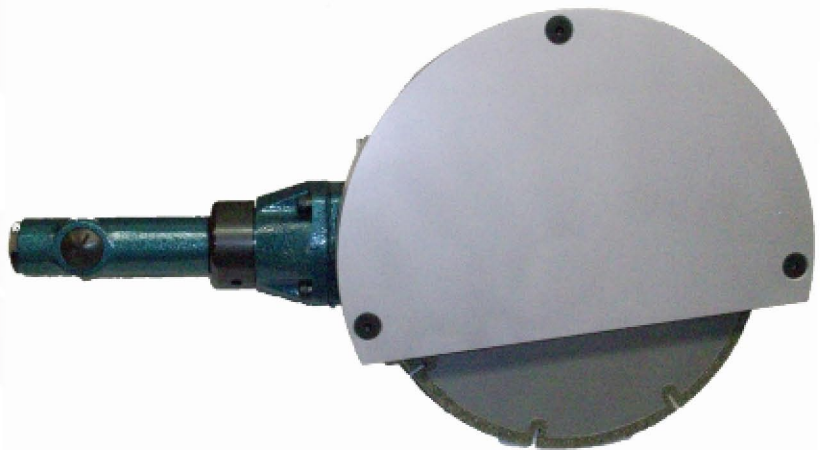
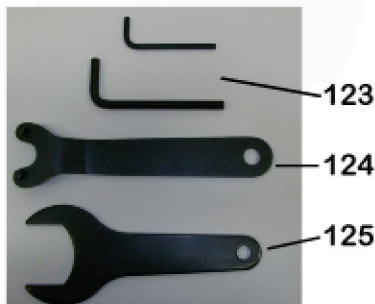
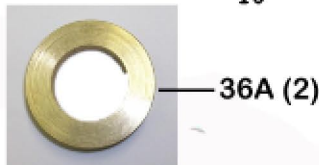
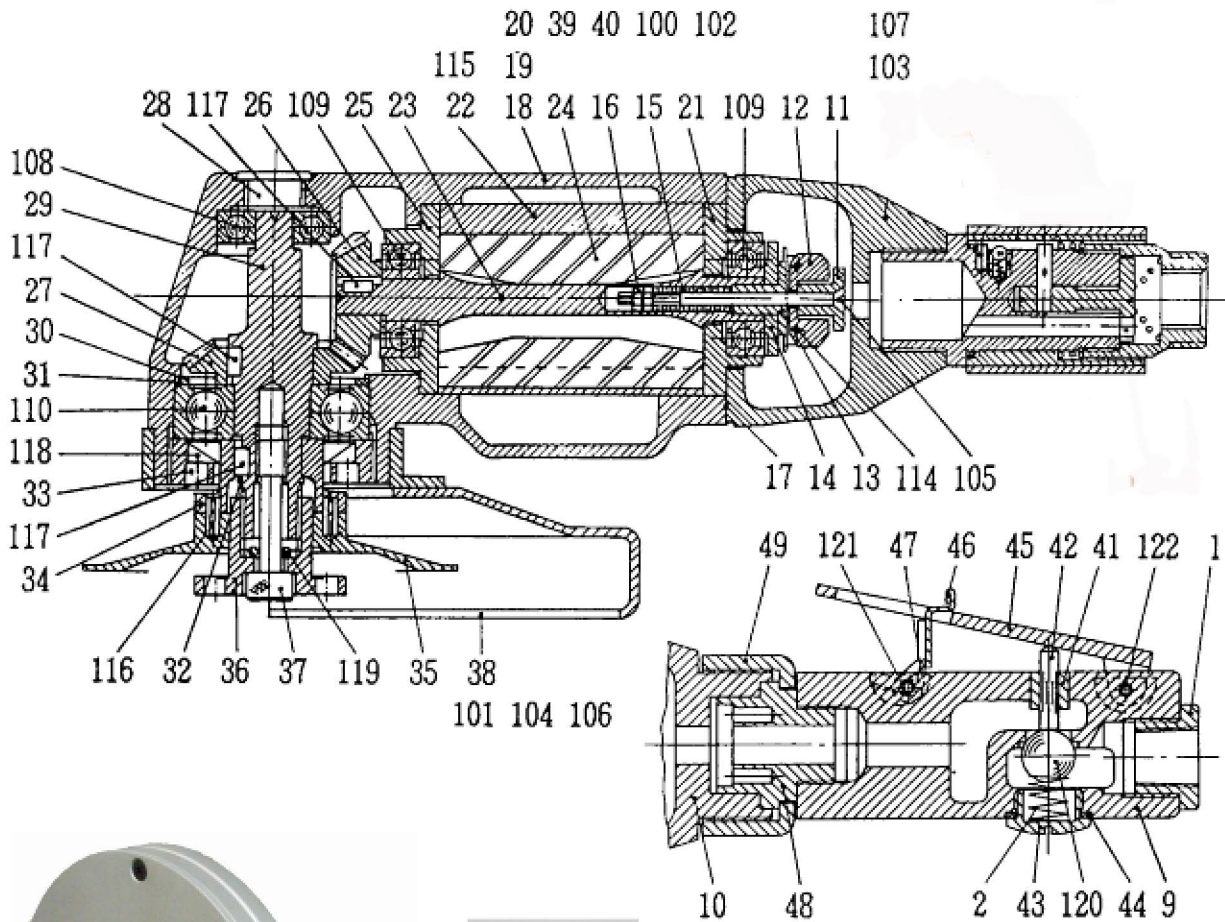


DIATRIM

SUPER DUTY TRIMMER 10-8 AND 10-10



DIATRIM TOOLS LTD.

2830 De Miniac, Montreal, Quebec, H4S 1K9

Tel.: 1-888-336-4893 - Tel.: (514) 336-7280 - Fax.: (514) 336-1344

E-Mail: info@diatrim.com

WWW.DIATRIM.COM

10-8 & 10-10 Parts Breakdown

Ref.	Description	Part number
1	Inlet Bush	170010h020
2	Throttle spring	G61000B210
9	Throttle Arbor	G53W10H290
10	Handle	G58W10H550
11	Governor Valve	G53010G200
12	Governor Weight	G53010G220
13	Governor Body	G53010G210
14	Bearing Cover	G58010S640
15	Governor Spring	G53010B100
16	Governor Spindle Nut	G53010G260
17	Top Seal Packing	G58010P300
18	Rotor Case	G58010R730
19	Exhaust Packing	G53010P010
20	Exhaust Cover	G53010E030
21	Top Plate	G58010R300
22	Cylinder	G58010R200
23	Rotor	G58010R720
24	Vane	G58010R500
25	Bottom Plate	G58010R510
26	Rotor Gear	G58010R770
27	Spindle Gear	G58010S300
28	Oil Plug	G58010H080
29	Stone Spindle	G58010S320
30	Thin Washer	G58010Z410
31	Bearing Washer	G58010S630
32	Stopper Ring	G53010Z340
33	Spindle Case Nut	G58010S310
34	Stone Flange	G58010K310
36	Disc Wheel Nut	G58010K410
36A	Brass Flanges (2)	
37	Lock Screws	G53010Z910
38	8" Wheel Guard	G108
38A	10" Wheel Guard	G110
39	Holder Joint	G53010Z600
40	Holder	G53010Z580
41	Throttle Bush	G61000H270
42	Throttle Pin	G61000H310
43	Throttle Plug	G6100H360
44	Rubber Packing	G61000P800
45	Lever	G53W10H880
46	Stopper Ring	G53W10Z260
47	Stopper Spring	G53W10B250
48	Throttle Adaptor	G44700H350
49	Throttle Arbor Nut	G44E00H390
100	Hex Bolt	1010106008
101	Hex Bolt	1010106020
102	Hex Socket Cap Screw	1050104025
103	Hex Socket Cap Screw	1050106022
104	Hex Nut	10204010106
105	C-R Flat Screw	1994014001

Ref.	Description	Part number
106	Plain Washer	1951010060
107	Spring Washer	1954040020
108	Ball Bearing	2012006200
109	Ball Bearing	2012006201
110	Ball Bearing	2012006304
114	Spring Pin	3030020200
115	Spring Pin	3030030080
116	Spring Pin	3030040100
117	Key	3102040408
118	Oil Seal	4011284506
119	"O" Ring	4150100060
120	Rubber Ball	2800210450
121	Spring Pin	3030030180
122	Spring Pin	3030030250
123	Allen Key	
124	Pin Wrench 1-5/32"	
125	Wrench 1-5/8"	
126	8" Superspeed Blade	54-818
126A	10" Superspeed Blade	54-1018

Important

Please read these instructions before using your 10-8 & 10-10

Check tool thoroughly and make sure blade has not been bent during shipment, turns freely and is securely attached to the air motor spindle. It is important that a filter / regulator / lubricator be located as near as possible to the trimmer(s) being used. Ensure that the air from the compressor is directed through the filter /regulator **first**, then through the lubricator.

1- Filter :

Will remove dirt, moisture, etc. from the air

2- Regulator :

Should be set at 85-90 PSI (**not higher**). Pressure should be checked at the tool inlet while tool is running.

3- Lubricator:

Fill with good quality air tool oil (SAE5). Properly lubricating tools can extend tool life up to five times. Set lubricator to release 3-4 drops of oil per minute into airline of tool.

DIATRIM recommends that you use a minimum air hose size of 1/2" I.D. Air hose length, from lubricator to tool, should not exceed 30 feet.

WARNING!

Failure to obey these warnings could lead to serious injury or death -- Always wear eye protection complying with standards -- Before each use, check that the blade/cutter is free from cracks or any other damage -- Do not use if damage is suspected -- Only use for fiber reinforced plastics (FRP) -- Keep body/clothing clear of spinning blade / cutter -- Mount blade/cutter securely -- Never use blade/cutter in the saw machine that will exceed max recommended RPM -- For cutters/blades with shaft, never lean on the shaft or use the shaft as guide as this might break the shaft - Wear dust mark if dust is not completely collected at source -- Only operate saw machine when proper saw guards and protections are in place and working properly -- Properly secure work piece before cutting -- Allow saw to reach full speed before cutting -- Do not modify the air tool, the guard or the blade/cutter - Keep this label in a safe place for future reference - Standard recommended speeds: 10 000 surface feet per minute

AVERTISSEMENT!

Ne pas tenir compte de ces avertissements pourrait causer de graves blessures corporelles -- Toujours porter des lunettes protectrices conformément aux normes -- Avant chaque utilisation, s'assurer que la lame/le couteau est exempt de fissures ou de tout autres bris. Ne pas utiliser si un bris est suspecté -- Utiliser seulement pour couper la fibre de verre et la fibre de carbone -- Tenir le corps et les vêtements éloignés de la lame/couteau en mouvement -- Bien installer la lame/le couteau -- Ne pas utiliser la lame/le couteau avec un outil qui dépasse le nombre maximum de tours/minute recommandés -- Pour les lames/couteaux avec mandrins, ne jamais s'appuyer sur le mandrin et ne jamais utiliser le mandrin comme guide de coupe : ceci peut briser le mandrin - Porter un masque contre les poussières -- Utiliser la scie seulement si le dispositif de sécurité est en place et en état de marche -- Avant la coupe, bloquer fermement la pièce à travailler -- Avant de commencer à travailler, attendre que la scie atteigne la vitesse indiquée -- Ne pas modifier l'outil pneumatique, le garde ou la lame/couteau - Garder ces instructions en lieu sûr pour des futures consultations - Vitesse recommandée : 10 000 pieds linéaires par minute